

## Intertrochanteric Femur fracture

Tips & Tricks from ESTES Education in collaboration with the Skeletal trauma section

### The Problem

Non-operative Treatment is seldom warranted

### The Challenge

Reduction and entry point are still subject to controversies

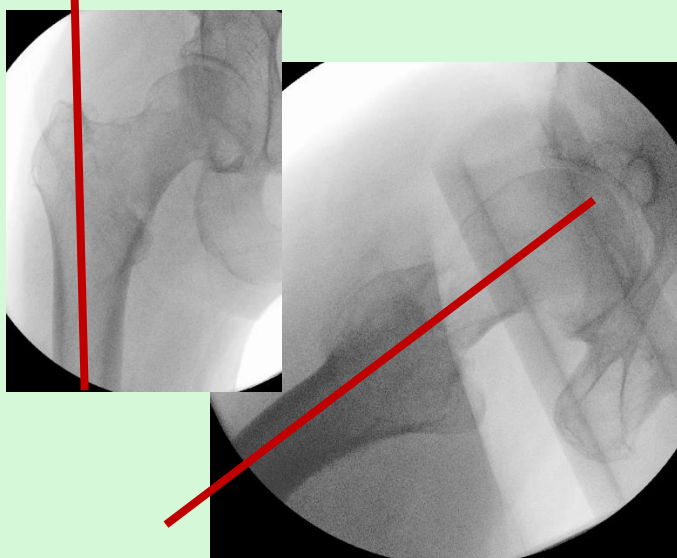
### The Evidence

- Overall 30 day mortality 7% in adults undergoing hip surgery
- Risk of complications and 30 day mortality increased when surgery is performed later than 24h of admission
- Routine evaluation of heart function is only recommended when new or worsening heart failures are present

### Tips & Tricks

Steps for closed reduction:

- Extension
- Adduction
- Internal rotation



Entry point of the wire should be in the extension of the femoral shaft in both ap and lateral view.

Aim a little medial to the tip as the nail has the tendency to shift laterally

### Conclusion

Patients benefit from early surgical treatment, entry point of the nail should be in-line with the femoral shaft in both ap and lat view.